

WINDOW WALL 80

FAÇADE

Floor-to-ceiling modular façade for the USA-Caribbean market

Module

1,400 x 2,700 mm

Sightlines

80 mm

Glazing

6 mm [1/4"] laminated tempered glass + 2.28 mm [3/32"] 6 units of Sentryglass Interlayer + 6 mm [1/4"] tempered glass (special glass designed to withstand tropical storms)

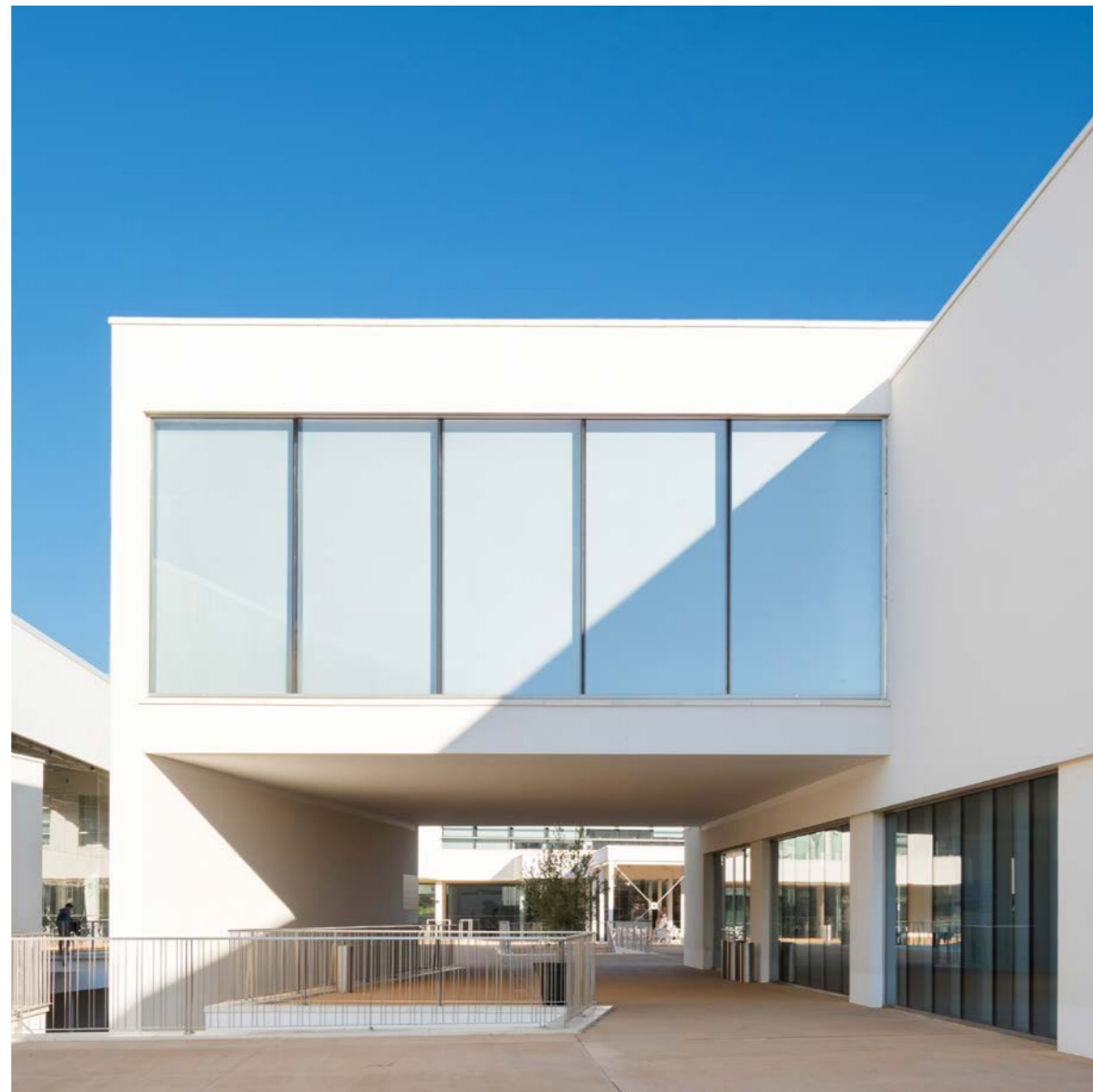
Maximum height

2,700 mm (8' 10")

Maximum width between the axes of the mullions

1,400 mm (4' 7")

Consult maximum weight and dimensions according to typologies



WINDOW WALL 80 FAÇADE



The Window Wall system is designed to withstand hurricanes and tropical storms typical of the East Coast of the United States and the Caribbean, resisting wind loads of up to 80 Psf. This is a floor-to-ceiling façade solution that has achieved the MIAMI-DADE NOA certification after successfully passing impact, air, watertightness, and wind tests, conducted under one of the most stringent standards in the world.

- Structural glass sealing
- Installation from inside the building
- 3 1/8" split mullion width
- Design load: 80 psf
- Large missile Impact rated
- Maximum height: 2,700 mm (8' 10")
- Maximum unit width: 1,400 mm (4' 7")
- Base materials: Concrete, steel and wood

Slab to slab unitized façade
In shop fabrication + easy installation

DOWSIL 983™
structural glazing sealant

GLAZING: Laminated glass
6 mm [1/4"] heat strengthened
2.28 mm [3/32"] 6 un sentry glass interlayer
6 mm [1/4"] heat strengthened

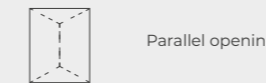


FEATURES

AEV test		TAS 202
Impact test		TAS 201
Pressure cycles		TAS 203

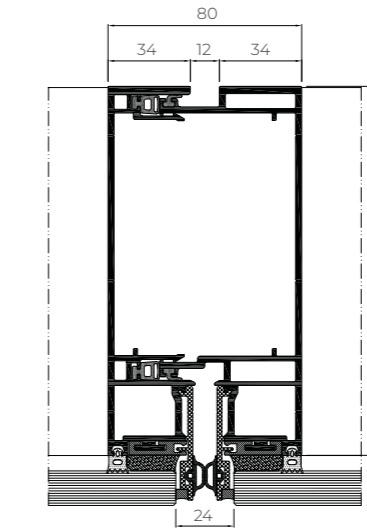
Reference test 5600 x 2700 mm (18' 4" x 8' 10"). 4 modules.

OPENING POSSIBILITIES

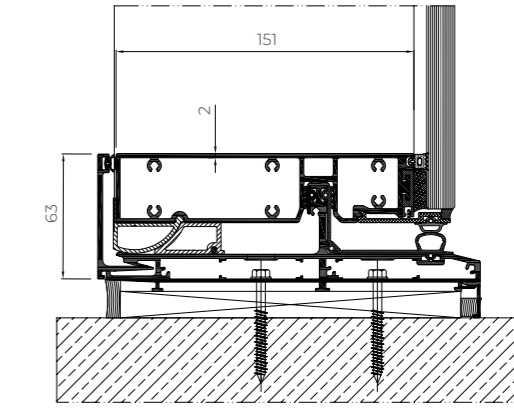


Parallel opening

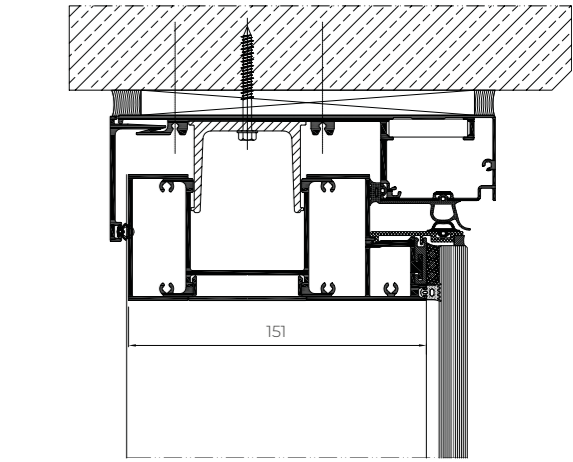
VERTICAL SECTION



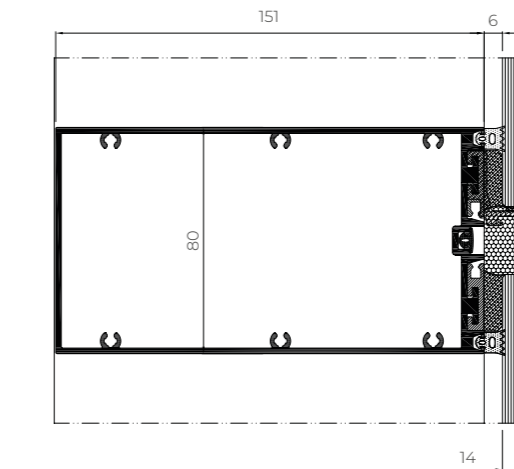
BOTTOM SECTION



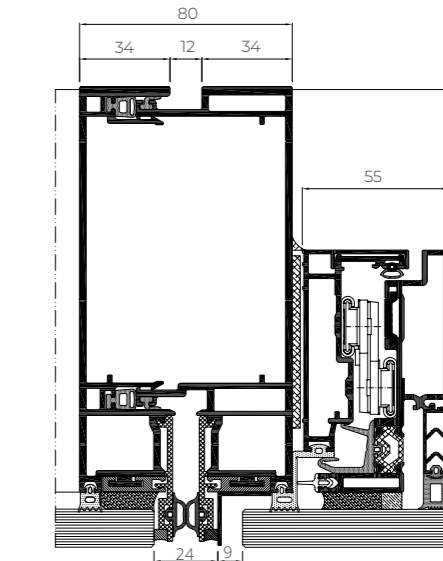
TOP SECTION



LATERAL SECTION



VERTICAL SECTION WITH OPENING



LATERAL SECTION WITH OPENING

