

WINDSPEED

SYSTEM

Sightlines

125 mm two-rail frame; 190 mm three-rail frame

Sash: 50 mm

Profile thickness

2 mm

Glazing

6 mm [1/4"] heat strengthened glass + 2.28 mm [3/32"]

6 units of Sentryglass Interlayer + 6 mm [1/4"]

tempered glass (special glass designed to withstand tropical storms)

Maximum sash dimensions

Width (L) 5'- 1,525 mm, Height (H) 9'- 2,750 mm

Maximum sash weight

240 kg

Consult maximum weight and dimensions according to typologies



WINDSPEED SYSTEM



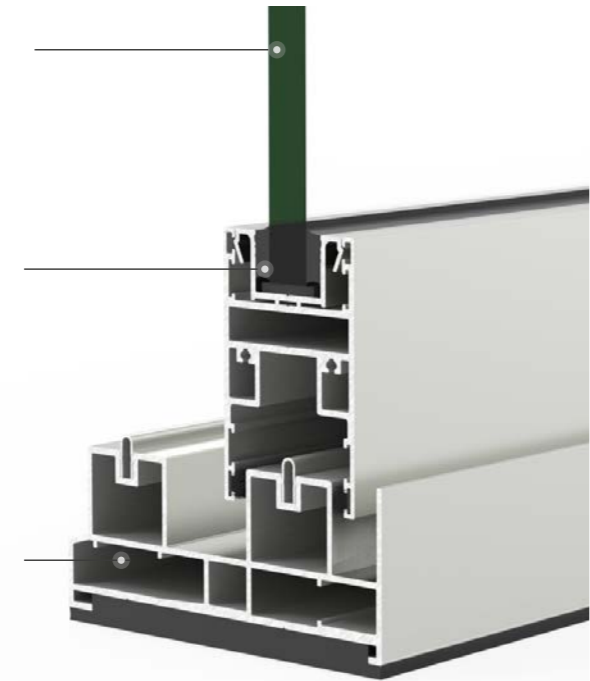
This series has been specifically conceived for the American market, developed to resist extreme conditions caused by hurricanes. The Wind Speed can withstand wind loads of up to 80 Psf, thanks to aluminium profiles with greater thicknesses and inertias, combined with high-impact resistance glazing. It holds the FLORIDA STATE APPROVAL certification, which certifies that it has successfully passed impact, air, watertightness, and wind tests, conducted under one of the most stringent regulations in the world.

- Designed to comply with Florida Building Code requirements
- Design load: +80/-80 PSF
- 50 mm minimalist reinforced interlocks
- Reinforced astragals
- Structural glass sealing around entire perimeter of the sash
- Five lock points
- Optional sill riser
- Large missile impact rated

GLAZING
6 mm [1/4"] heat strengthened glass + 2.28 mm [3/32"] 6 units of Sentryglass Interlayer + 6 mm [1/4"] tempered glass

DOWSIL™ 983
structural glazing sealant

Two and three sash configuration

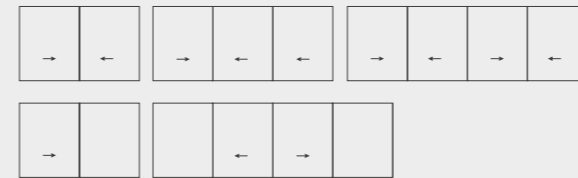


FEATURES

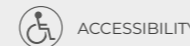
| | | |
|-------------------------|--|-----------|
| AEV test | | TAS 202 |
| Forced entry resistance | | ASTM F842 |
| Impact test | | TAS 201 |
| Pressure cycles | | TAS 203 |

Reference test 1,584 x 2,75 m [5' 2 1/8" x 9' 1/4"], 2, 3 & 4 sashes.

OPENING POSSIBILITIES



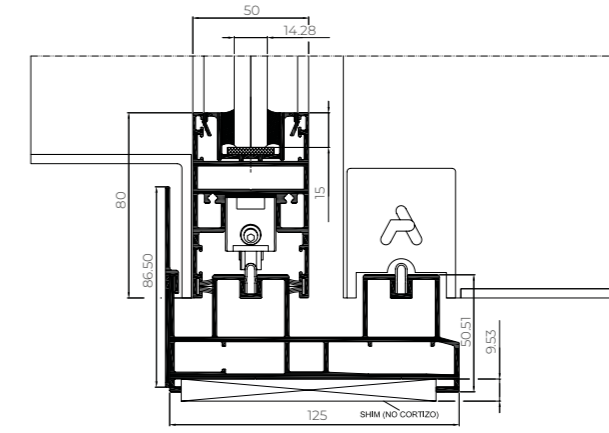
POSSIBILITIES



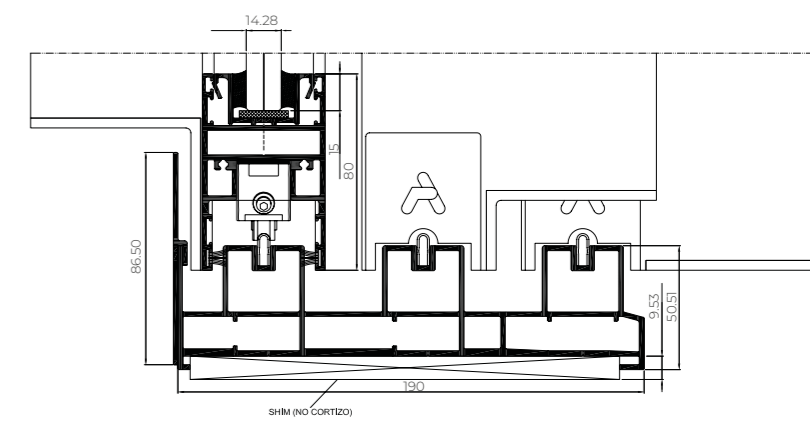
ACCESSIBILITY

Sliding
1 rail (1 sash + 1 fixed light)
2, 3 & 4 rails

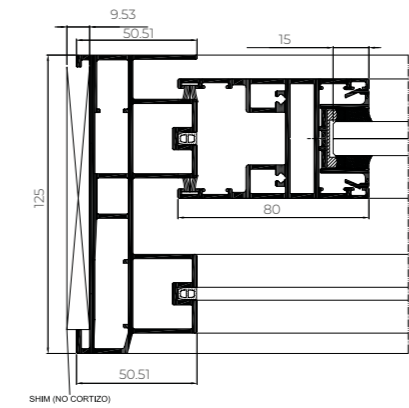
DOUBLE TRACK



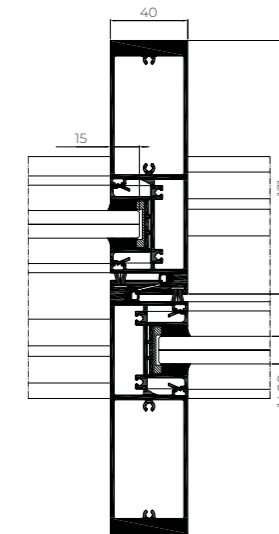
TRIPLE TRACK



LATERAL SECTION



INTERLOCK



INTERLOCK HANDLE

